

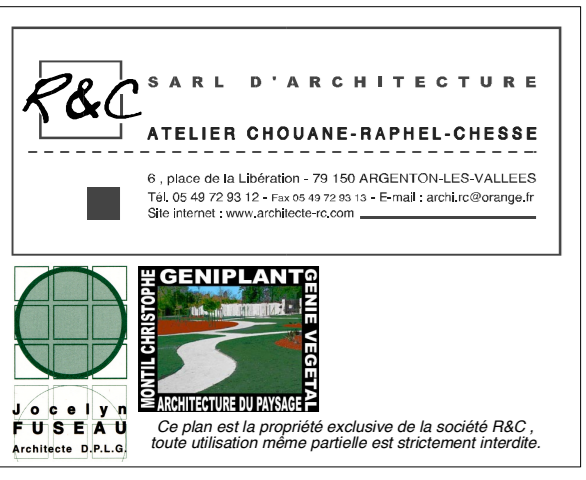
**ECO-REHABILITATION DU SITE "MOULIN DU MARAIS" A LEZAY**

COMMUNAUTÉ DE COMMUNES du LEZAYEN

RUE DU GRAND PRE  
79120 LEZAY

**02**

BAT B



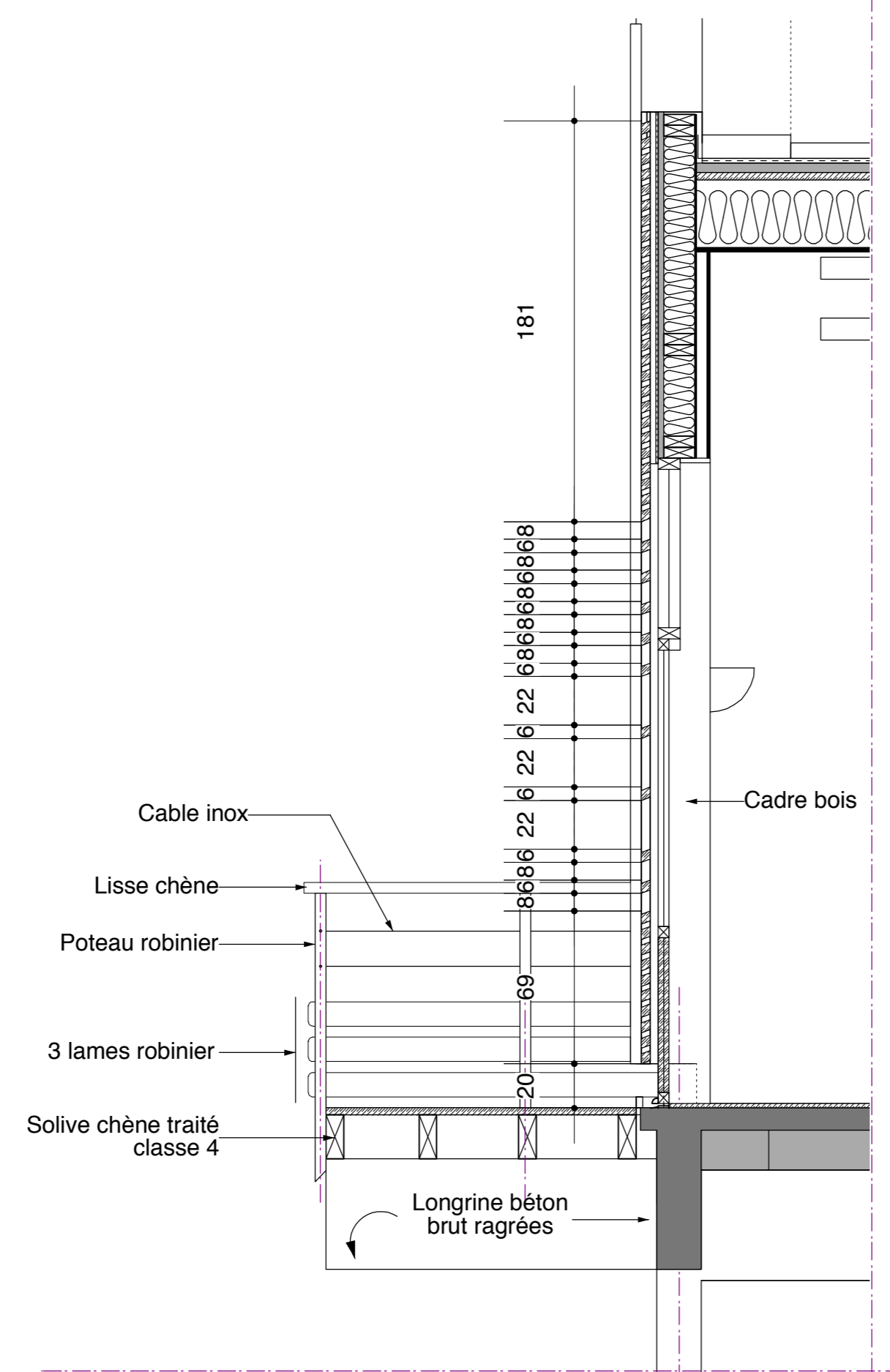
**BUREAUX D'ETUDES**  
 Lots techniques  
 BET AGE  
 2, rue DUPIN  
 79000 BRESSAIRE  
 T. 05 49 65 14 10  
 Structure  
 BE ATES  
 28, rue Blaise Pascal  
 79000 NIORT  
 T. 05 49 06 91 11  
 Economiste  
 CABINET MARET  
 3, rue de VERDUN  
 79002 PARTHENAY cedex  
 T. 05 49 03 37  
 Bureau de contrôle  
 NORRSKO  
 08000 PORTIERS  
 T. 05 49 38 41 01

PLAN RDC, échelle 1/50  
 FACADES, échelle 1/100  
 COUPES, échelle 1/50  
 DETAILS, échelle 1/25  
 DETAILS, échelle 1/10

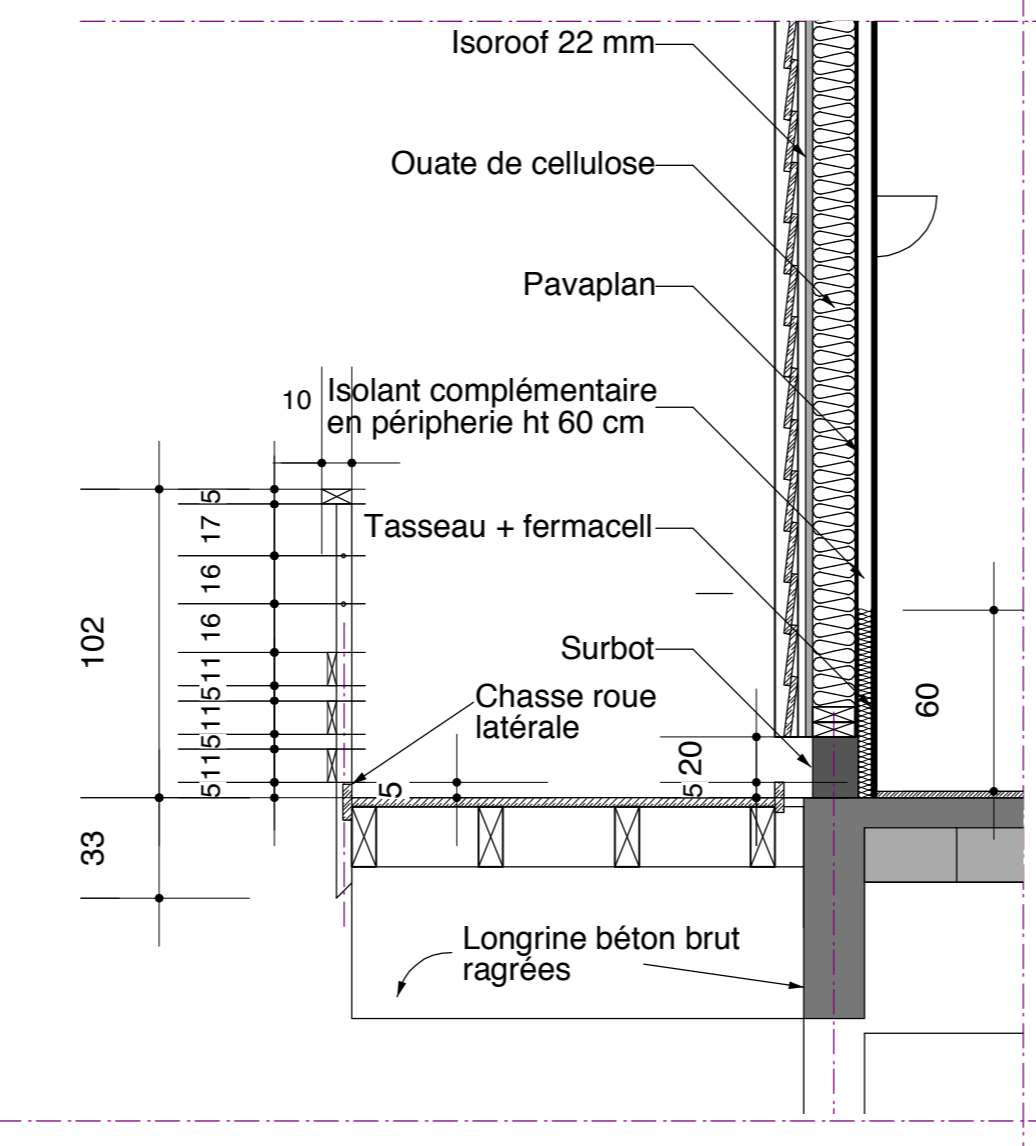
**DCE** dessin par: RC

Modif cations:  
 Référence: 08-126 Date: 19/12/2008

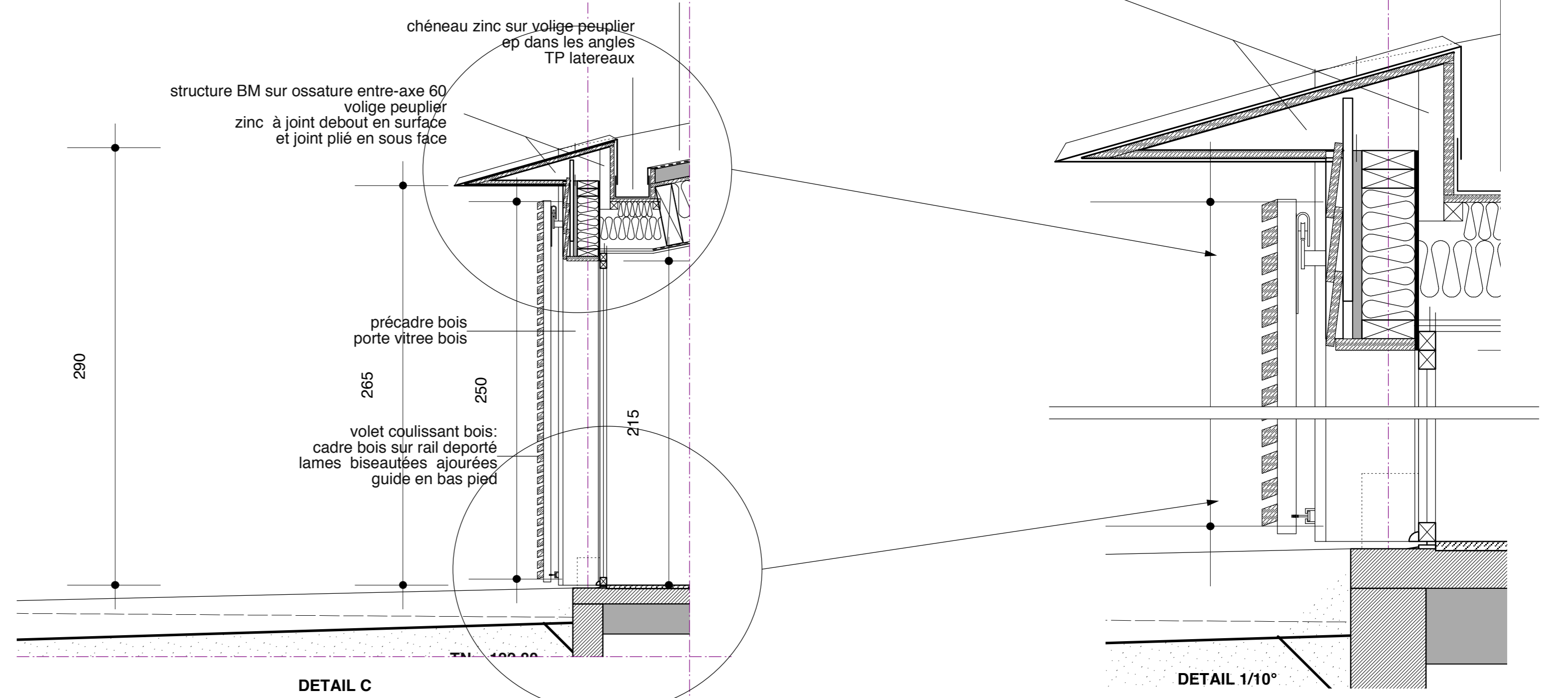
Ce document n'est pas un plan d'exécution, toute réalisation doit être l'objet de plans techniques d'exécution établis par les entreprises sur les baux d'études.



DETAIL A

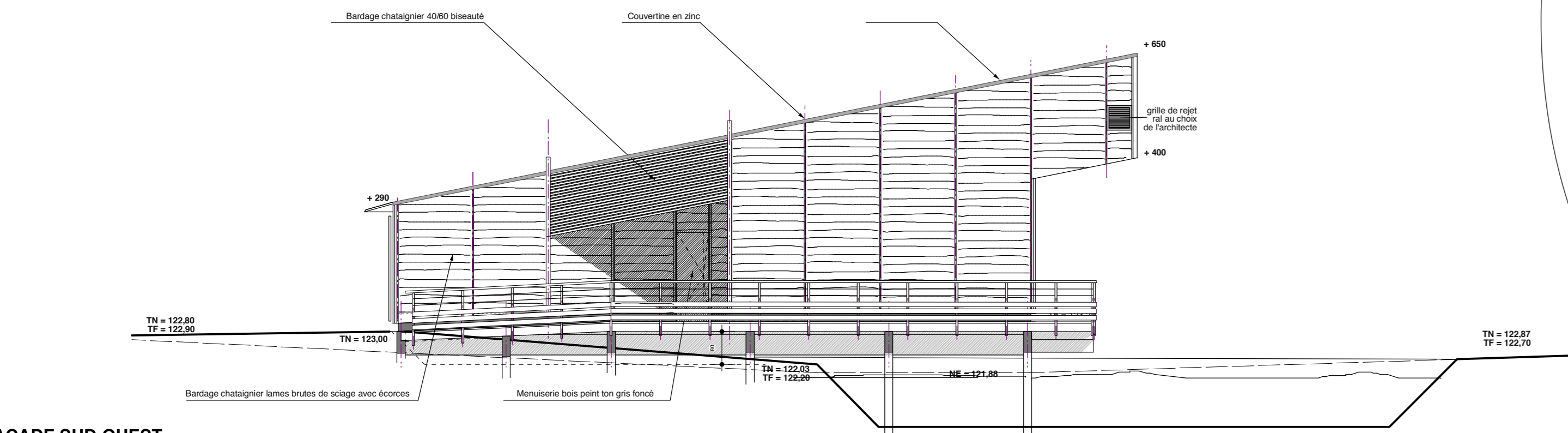


DETAIL B

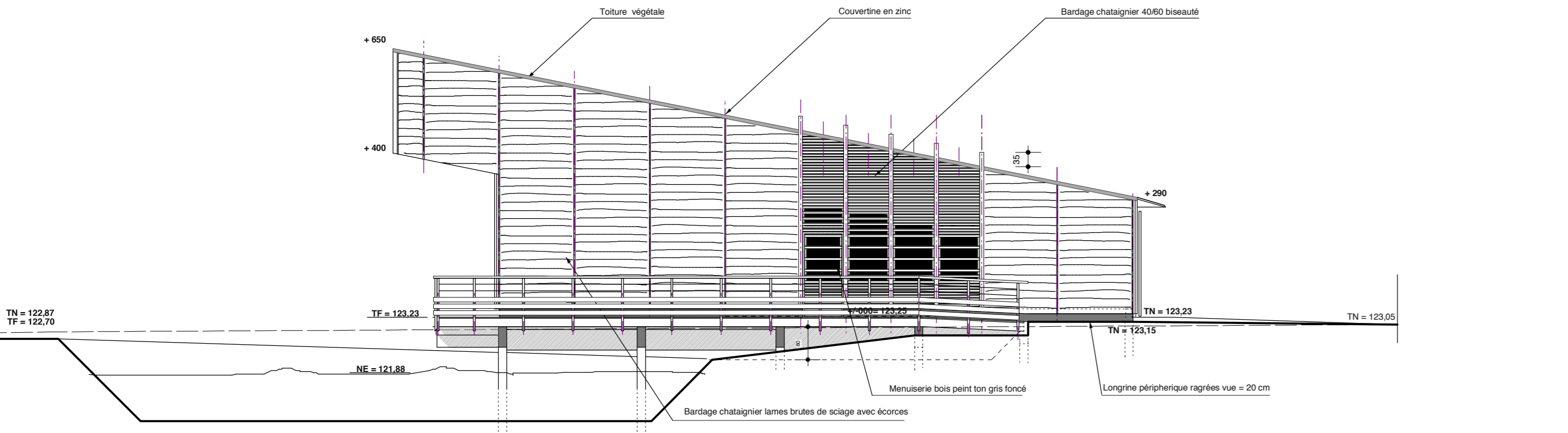


DETAIL C

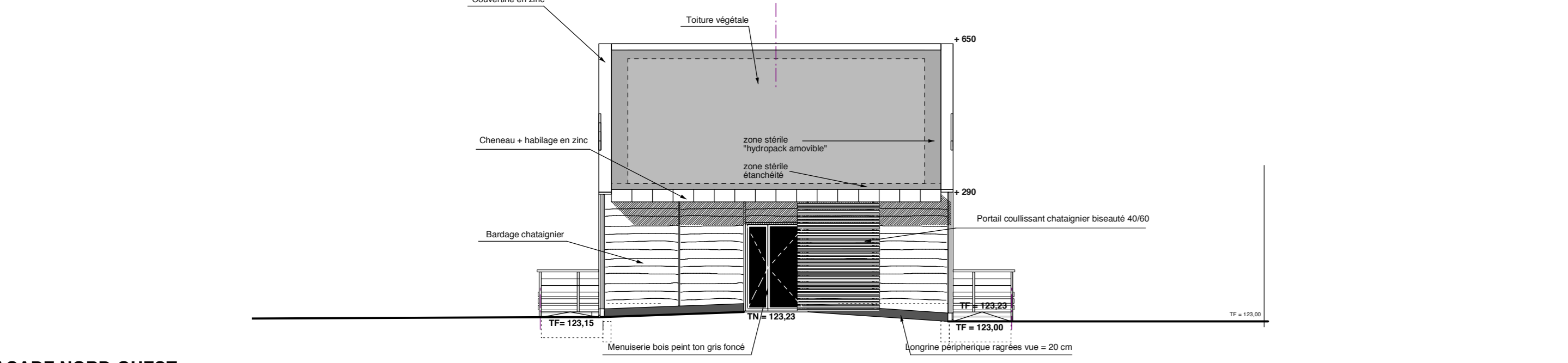
DETAIL 1/10"



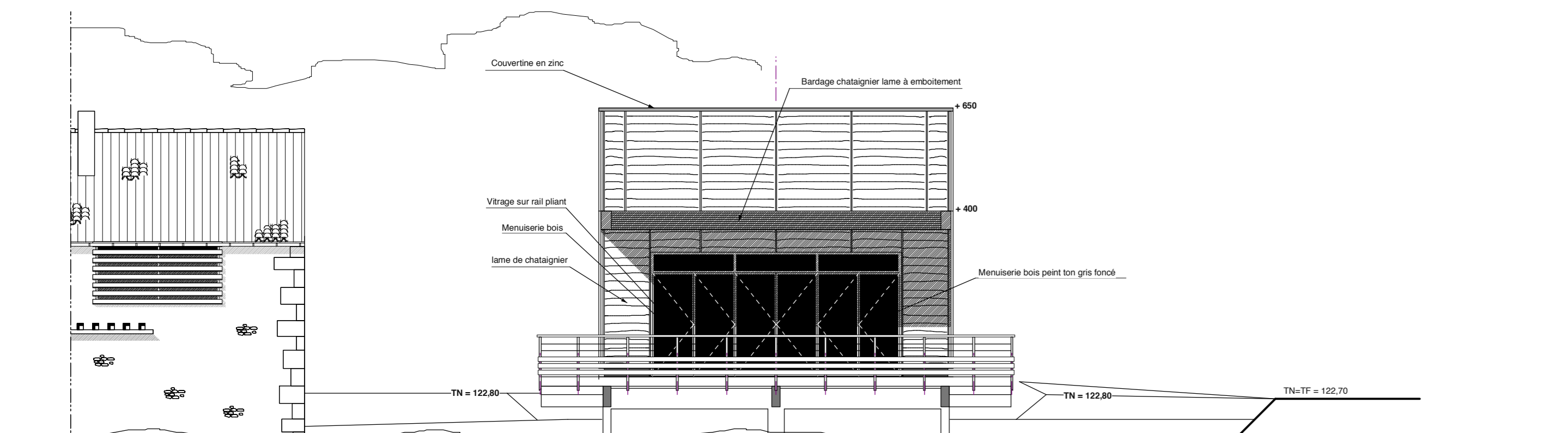
FACADE SUD-OUEST



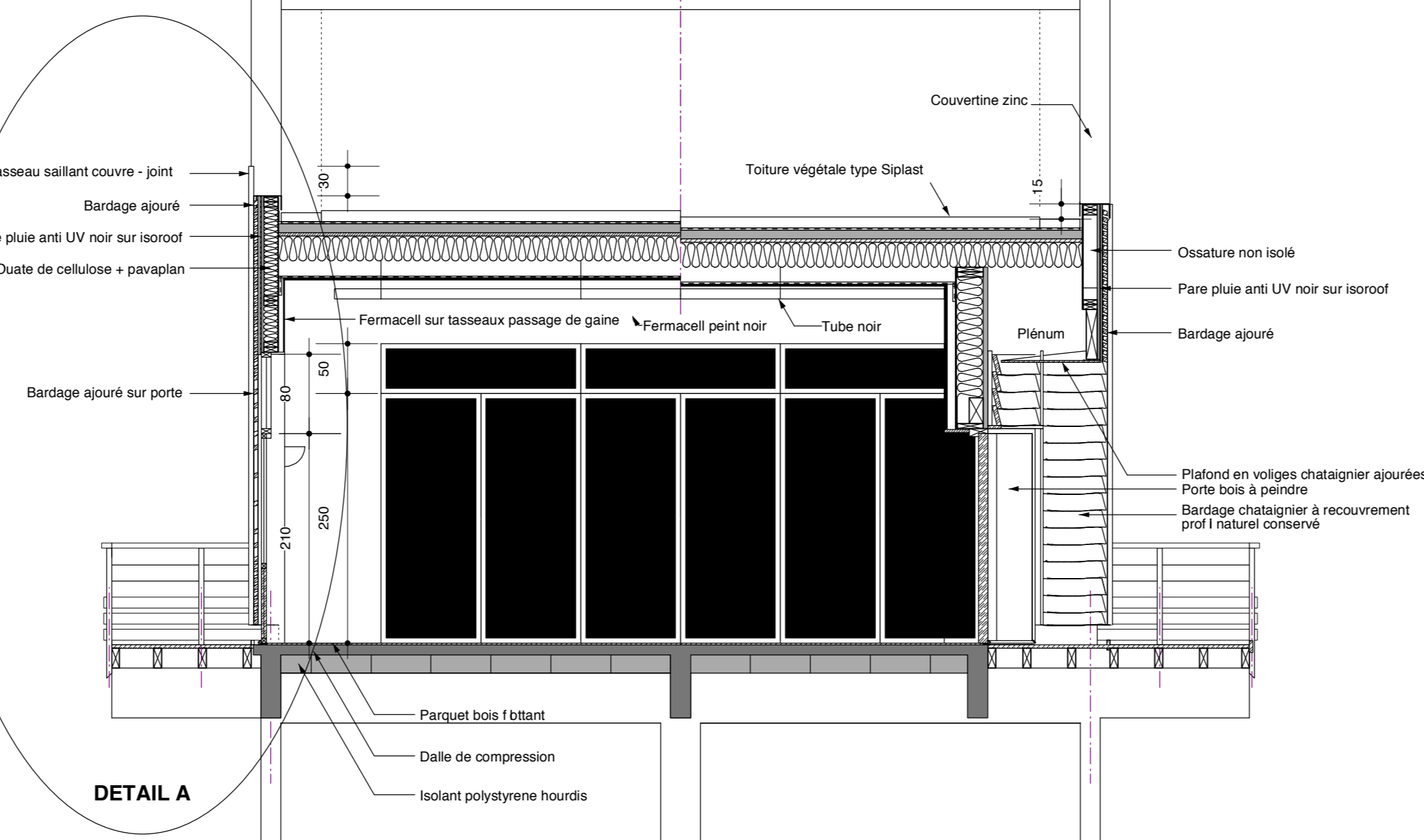
FACADE NORD-EST



FACADE NORD-OUEST

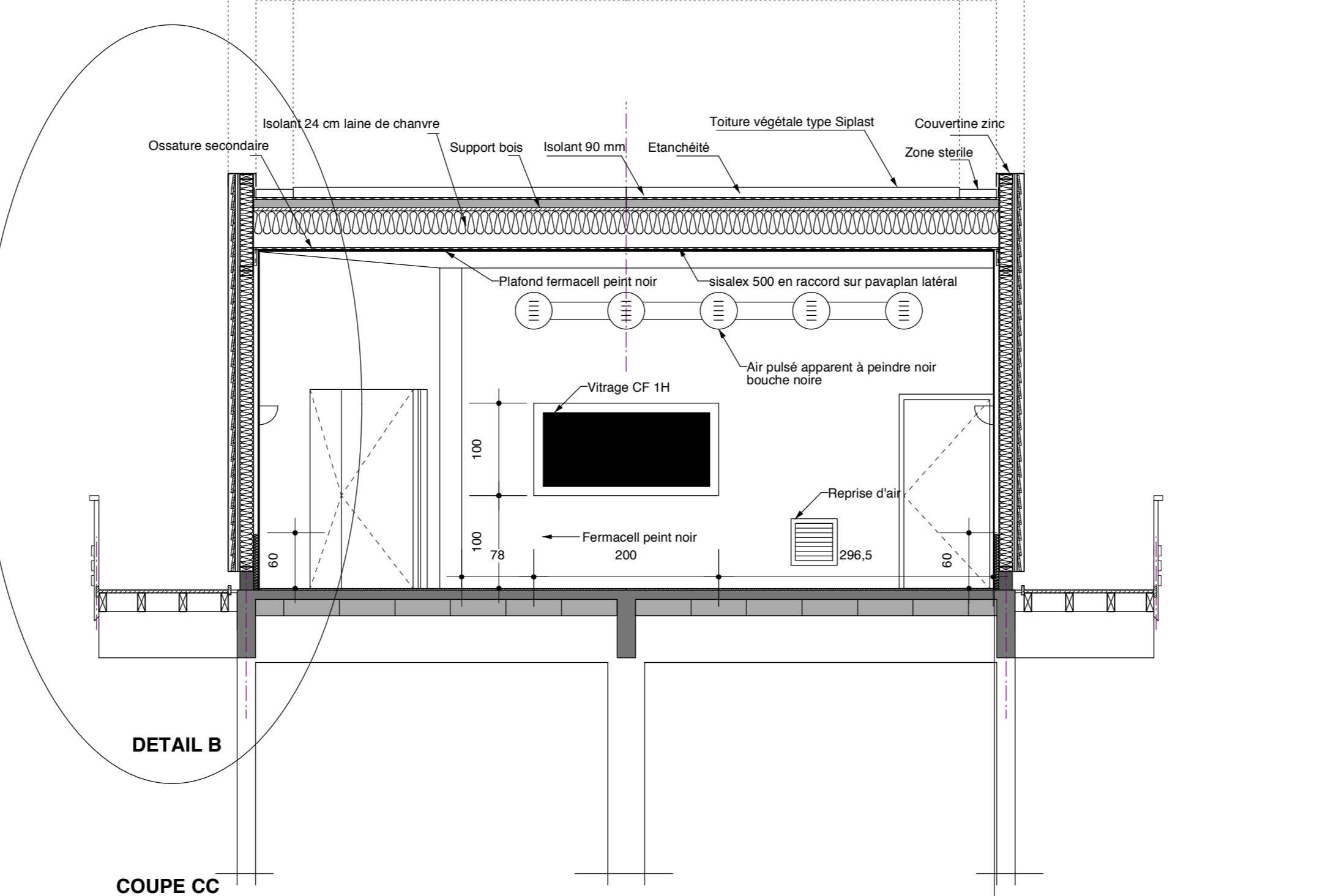


FACADE SUD-EST



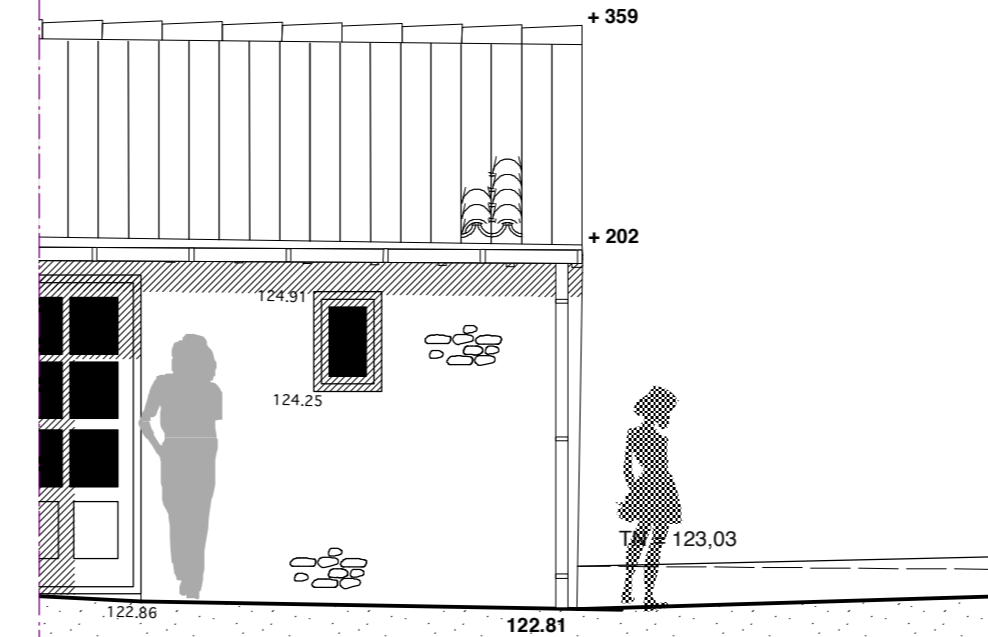
DETAIL A

COUPE BB

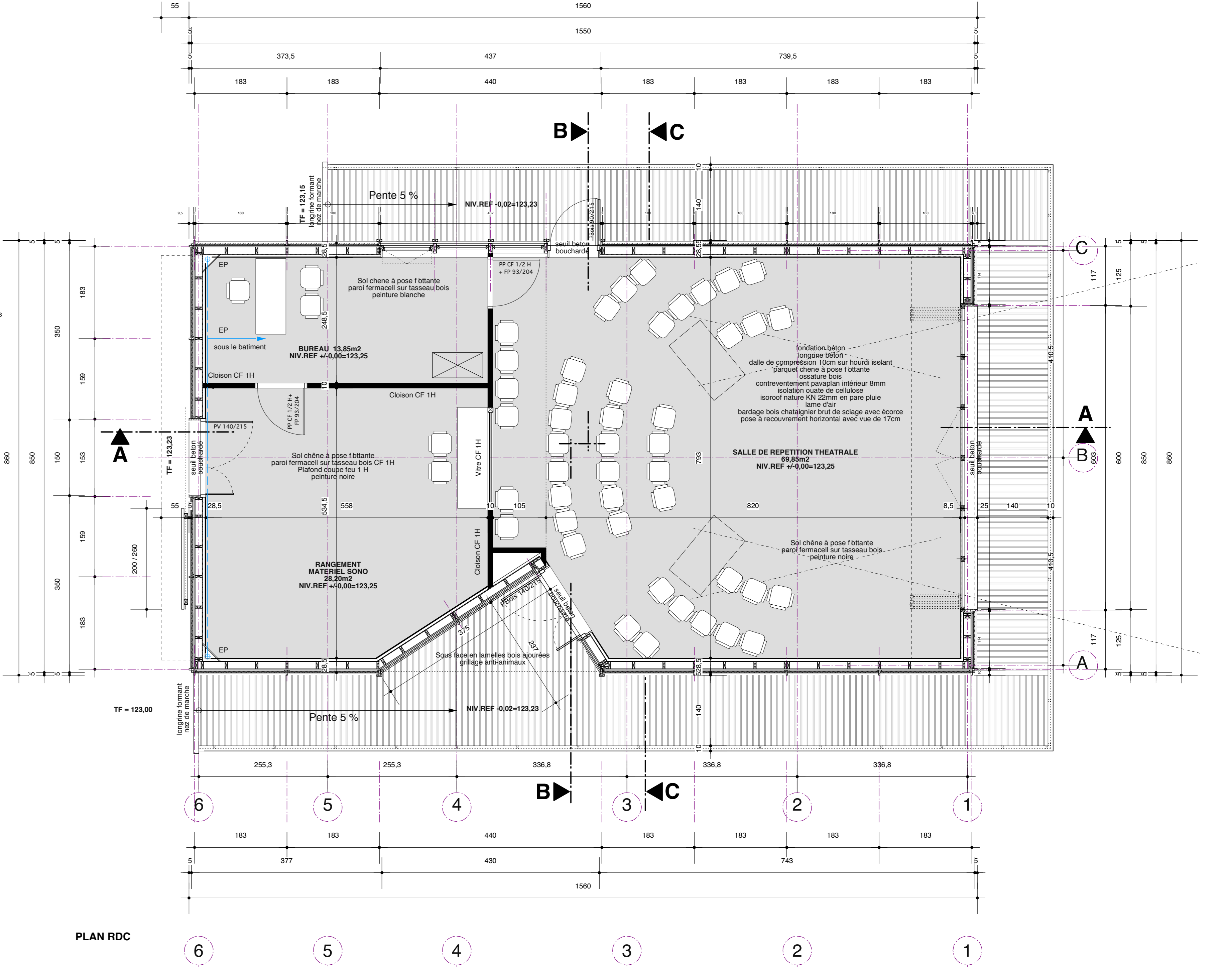


DETAIL B

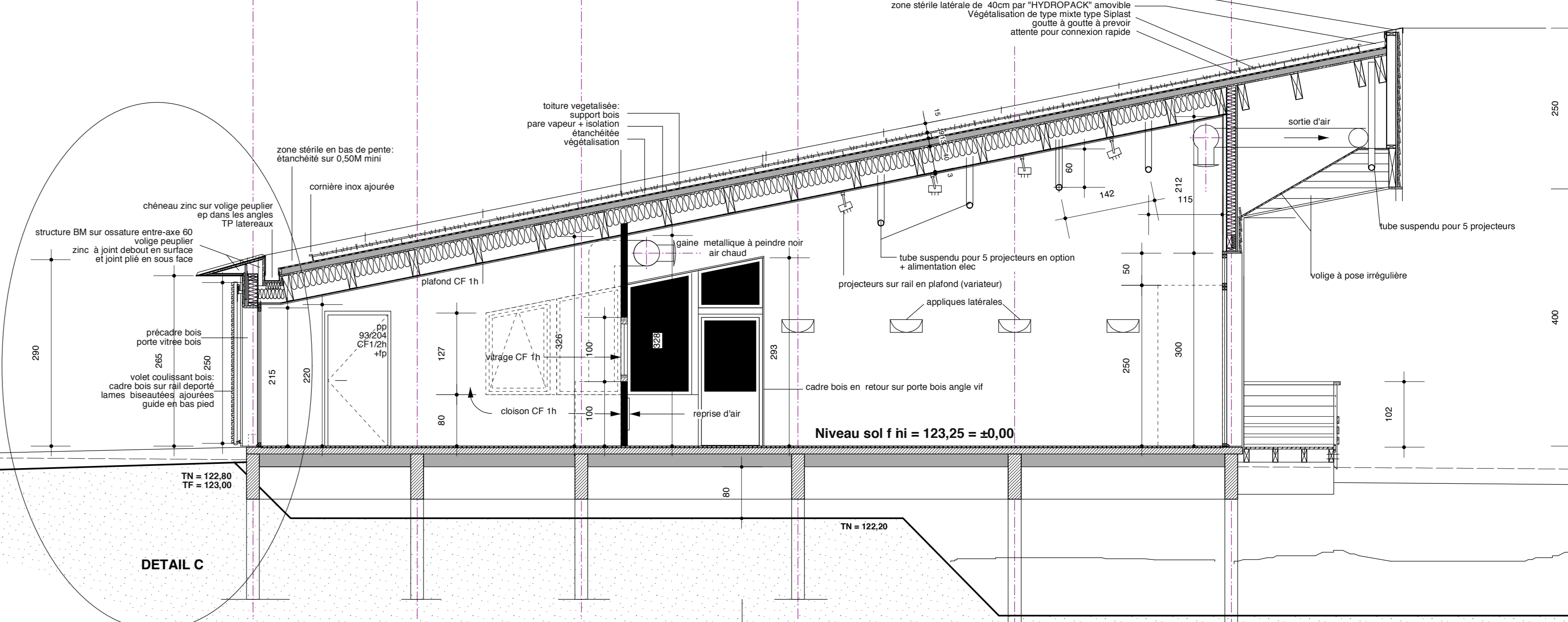
COUPE CC



COUPE AA



PLAN RDC



DETAIL C